

# Hunter Information Package

## [Wapiabi Provincial Recreation Area](#)

### Wildlife Management Unit (WMU) 434 and 430

If you have questions or concerns please contact a Conservation Officer or park staff at 403-845-8349 or the Rocky Mountain House Parks enforcement line at 403-845-8585. For emergencies please dial 911. To report poaching please call Report-A-Poacher at 1-800-642-3800.

# Contents

Introduction	3
Wapiabi PRA Map	7
Access Information	8
Successful Hunter Information	9
Wildlife Management Assistance	11
Important Park Specific Information for Hunters	12
Extra Word of Caution	14



**Hunter Information Package**  
Wapiabi Provincial Recreation Area  
Wildlife Management Unit (WMU) 434  
and 430

# Introduction

There are hunting opportunities on more than 85 percent of the land base in Alberta's parks system. Hunting is permitted in all Wildland Provincial Parks and some Provincial Parks and Provincial Recreation Areas under the Provincial Parks Act.

Alberta Parks are enjoyed by a wide range of recreational users year-round and in Provincial Parks and Provincial Recreation Areas, where hunting is allowed, Firearm Discharge Permits are required to address public safety and inform hunters of areas where discharge is prohibited because of site specific values and facilities.

Hunting is a supported activity in Alberta Parks because of its alignment with preserving natural heritage, including traditional land use, providing exceptional recreation opportunities, providing tools for wildlife management, and getting people outside and connecting with nature.

Alberta Parks are enjoyed by a wide range of recreational users year-round and in Provincial Parks and Provincial



**Hunter Information Package**  
Wapiabi Provincial Recreation Area  
Wildlife Management Unit (WMU) 434  
and 430



Recreation Areas, where hunting is allowed, Firearm Discharge Permits are required to address public safety and wildlife management issues as well as to protect sensitive areas and species.

Wapiabi is designated as a Provincial Recreation Area and is managed by the Parks Operations Division of Alberta Environment and Parks. It is located in central Alberta northwest of Nordegg in the Rocky Mountains and is a valuable conservation area providing a space for recreational activities. It is over four hectares and includes the valley of the Wapiabi River from Wapiabi Gap east to the Blackstone River. Wapiabi Provincial Recreation Area provides support to a variety of recreational activities including backcountry camping, fishing, hiking, and hunting.

Wapiabi Provincial Recreation Area is filled with wildlife representative of the Foothills and Rocky Mountain Region that it sits in. Wapiabi Provincial Recreation Area contains valuable habitat for Grizzly Bear, Grey Wolf, Moose and deer.



**Hunter Information Package**  
Wapiabi Provincial Recreation Area  
Wildlife Management Unit (WMU) 434  
and 430



Other people are present at all times of year at Wapiabi Provincial Recreation Area. Please be aware of their presence and take appropriate measures to ensure you are being safe and aware at all times.



**Hunter Information Package**  
Wapiabi Provincial Recreation Area  
Wildlife Management Unit (WMU) 434  
and 430

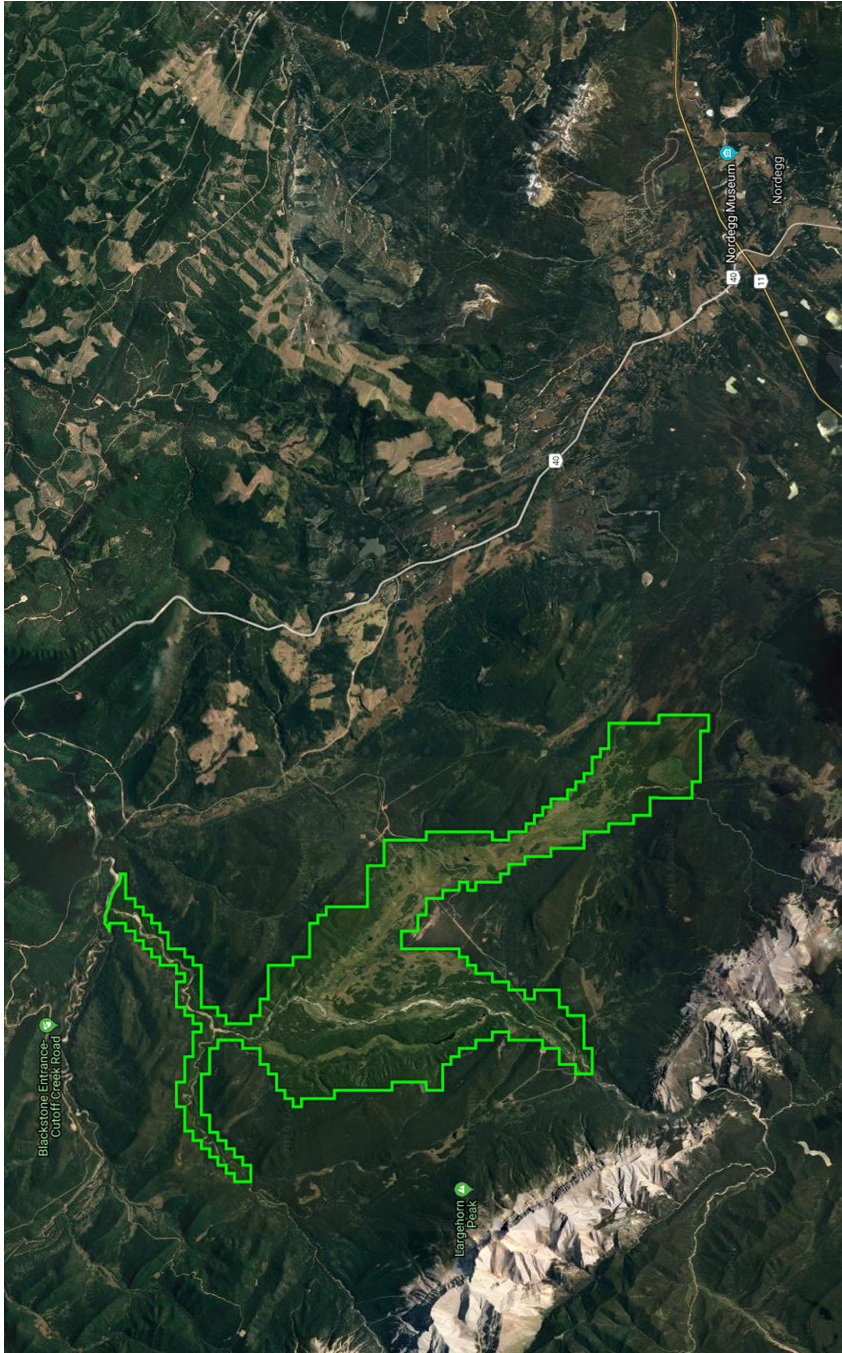


**Hunter Information Package**

Wapiabi Provincial Recreation Area  
Wildlife Management Unit (WMU) 434  
and 430



# Wapiabi PRA Map



## Access Information

Access into the park is by a variety of ways including vehicle or foot power. Off-highway vehicles (OHVs) cannot be used inside the park. Hunters may use pedal bicycles and skis, to travel around the park. Please be aware there may be adverse conditions that may make conditions poor (e.g. muddy or snowed in). All trails are open to hunting. Motorized travel within rivers and creeks is detrimental and prohibited.



**Hunter Information Package**  
Wapiabi Provincial Recreation Area  
Wildlife Management Unit (WMU) 434  
and 430



# Successful Hunter Information

## Emergency Preparedness

Be prepared for weather changes including precipitation, unpredictable weather, and fluctuating temperature.

Be equipped with survival gear – matches, flashlight, warm clothes, compass, extra batteries, flagging tape, food, water.

Access road is a gravel haul road and 4x4 is recommended.

It is advised to carry flagging tape so you can mark your kill site (so you can find it again) and find your path back to your vehicle. Make sure all flagging is removed on your way out.

Be prepared to spend the night outdoors. Unpredictable precipitation, extreme elevation, and weather can make travel hazardous and you might find yourself unable to travel with or without a vehicle.



**Hunter Information Package**  
Wapiabi Provincial Recreation Area  
Wildlife Management Unit (WMU) 434  
and 430

Tell a friend or family member where you are going, how to contact you, what time you expect to return, and make sure they know who to contact if you are late and they are unable to contact you.

Hunters should use caution and be aware that there are many predators in the area including Grizzly. Should it be necessary to leave your animal overnight, be sure to leave human scent around the carcass and drag the offal (organs) away from the carcass as these predators/scavengers will typically consume those parts first.



**Hunter Information Package**  
Wapiabi Provincial Recreation Area  
Wildlife Management Unit (WMU) 434  
and 430

# Wildlife Management Assistance

Not frequently expected in Wapiabi Provincial Recreation Area but if found, please report any ear tags to Conservation Officers upon discovery. Ear tags may be white with black numbers, or orange stating “DO NOT EAT” followed by a phone number. The “do not eat” tag is placed on animals that have been tranquilized; hunters must tag their animal and can still expect to salvage their harvest, but depending on when the animal was tranquilized, the hunter will find out whether the meat is safe to consume (or whether a replacement tag may be issued).

For more information on [Indigenous hunting and fishing in Alberta](https://www.alberta.ca/indigenous-hunting-and-fishing-in-alberta.aspx)\* please refer to the webpage.

Contact the office at 403-845-8349 for further questions or concerns.



**Hunter Information Package**  
Wapiabi Provincial Recreation Area  
Wildlife Management Unit (WMU) 434  
and 430

\*<https://www.alberta.ca/indigenous-hunting-and-fishing-in-alberta.aspx>

# Important Park Specific Information for Hunters



**Hunter Information Package**  
Wapiabi Provincial Recreation Area  
Wildlife Management Unit (WMU) 434  
and 430

1. As a reminder, hunters must also abide by federal legislation regarding firearm transport and storage in a vehicle (particularly for times when a firearm is left unattended). The park does require that firearms not in use must be encased.
2. Hunters must salvage their animal in accordance with the provincial Wildlife Regulations and will not receive assistance from park employees.
3. Do not cut any fences to provide easy access to your harvested animal; this includes any of the interior fences or the fences belonging to surrounding landowners.
4. Be a conscientious neighbour! If you wish to hunt on adjacent private land or you need to access private land in order to salvage your animal on adjacent

private land, you must obtain permission from the landowner before doing so to avoid trespassing.

5. Tree stands are permitted only if they are portable, man-made, self-contained (do not build it using natural materials from the park), and do no permanent damage (do not remove/knock down dead or live branches) to the tree(s) and surrounding vegetation. Tree stands must be taken down at the end of each hunt (every day) to ensure fairness and equal access to hunting locations throughout the season.



**Hunter Information Package**  
Wapiabi Provincial Recreation Area  
Wildlife Management Unit (WMU) 434  
and 430

## Extra Word of Caution

Wapiabi Provincial Recreation Area has no fire pits or campgrounds. Backcountry camping is permitted but you must be self-contained and pack in all your gear and pack out all your garbage. Please contact [Alberta Fish and Wildlife](#)\* for more information.



### Hunter Information Package

Wapiabi Provincial Recreation Area  
Wildlife Management Unit (WMU) 434  
and 430

\*<http://www.albertaregulations.ca/huntingregs/>

In case of an emergency, call 911. To report concerns to a Conservation Officer, at 403-845-8349 or the Rocky Mountain House Parks enforcement line at 403-845-8585. The nearest hospital is located in Rocky Mountain House. The non-emergency line for the hospital is 403-845-3347.